

FEATURES

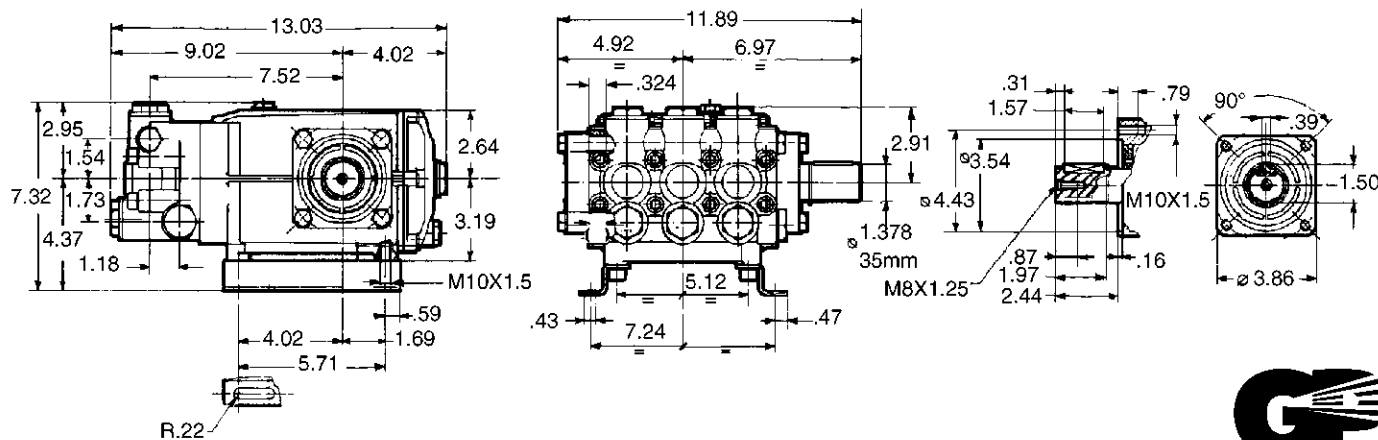
- The preferred pump frame in the pressure cleaning industry
- Forged brass manifold with an exclusive lifetime warranty
- Large-capacity, die-cast, anodized aluminum oil-bath crankcase
- Over-sized connecting rods for maximum life
- Heavy-duty tapered roller bearing.
- Solid ceramic plungers with continuously lubricated packings
- Unitized stainless steel inlet and discharge valves
- Available in left-handed “L” version

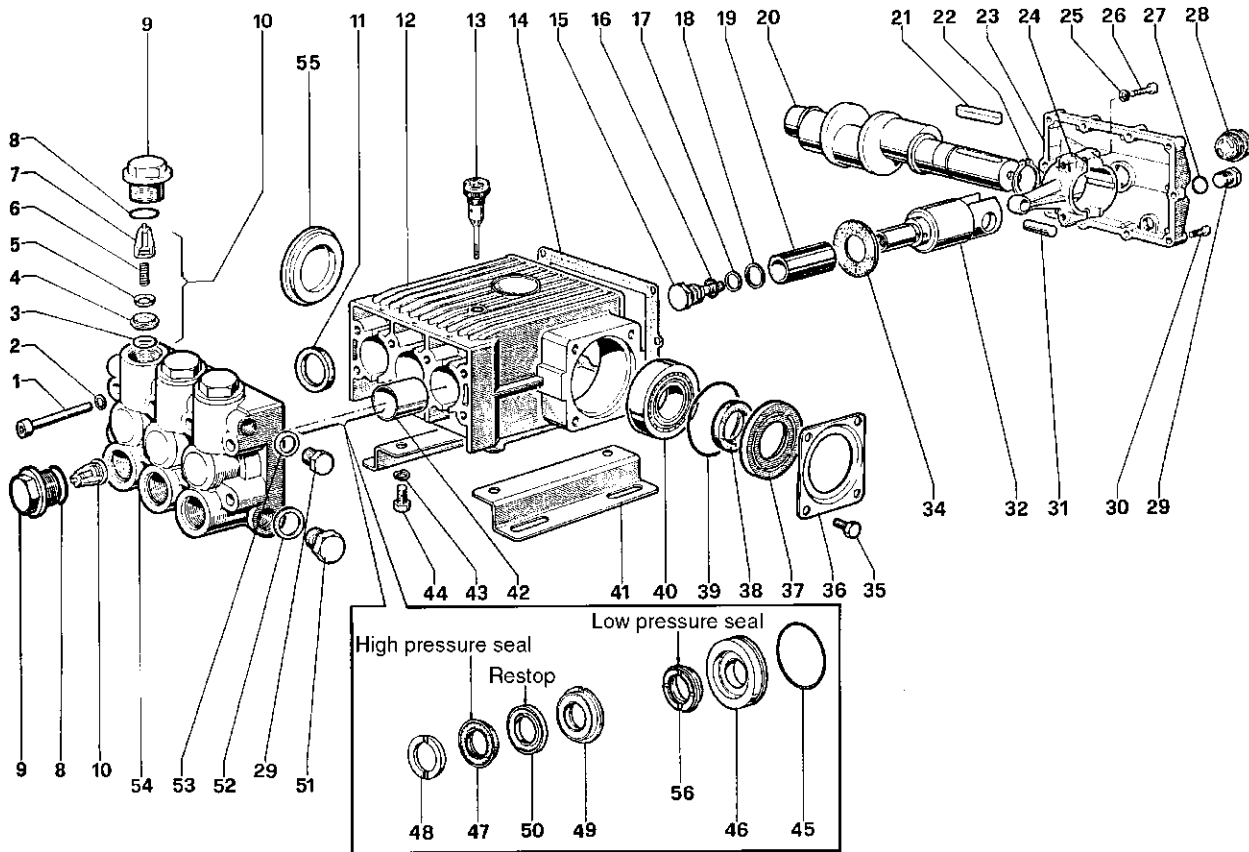


SPECIFICATIONS

| Pump Model | TS1041 | TS1531 |
|----------------------------|--------------------------|----------|
| Maximum Volume | 8.0 GPM | 7.92 GPM |
| Maximum Discharge Pressure | 1600 PSI | 2200 PSI |
| Maximum Pump Speed | 1450 RPM | |
| Maximum Inlet Pressure | 125 PSI | |
| Maximum Inlet Vacuum | 9 ft. water (7.9 in. Hg) | |
| Bore | .787 in. / 20 mm | |
| Stroke | .866 in. / 22 mm | |
| Crankcase Oil Capacity | 50.7 oz. | |
| Maximum Fluid Temperature | 165°F | |
| Inlet Port Thread | 3/4-14 BSPP-F | |
| Discharge Port Thread | 3/8-19 BSPP-F | |
| Shaft Diameter. | 1.378 in. / 35 mm | |
| Weight | 46 lbs. | |
| Dimensions | 13.0 x 11.9 x 7.3 in. | |

DIMENSIONAL DRAWING





PARTS LIST

| ITEM | PART NO. | DESCRIPTION | KIT NO. | QTY. | ITEM | PART NO. | DESCRIPTION | KIT NO. | QTY. | ITEM | PART NO. | DESCRIPTION | KIT NO. | QTY. |
|------|------------|----------------|---------|------|------|------------|-------------------------|---------|------|------|------------|------------------------|----------|------|
| 1. | 99.3787.00 | Screw | | 8 | 19. | 47.0404.09 | Plunger (20 mm) | | 3 | 38. | 90.1672.00 | Ring | 32 | 1 |
| 2. | 96.7104.00 | Washer | | 8 | 20. | 69.0210.35 | Crankshaft | | 1 | 39. | 90.4131.00 | O-Ring | | 2 |
| 3. | 90.3859.00 | O-Ring | 62 | 6 | 21. | 91.4969.00 | Key | | 1 | 40. | 91.8480.00 | Bearing | | 2 |
| 4. | 36.2017.66 | Valve Seat | 62 | 6 | 22. | 90.0695.00 | Cir-Clip | | 1 | 41. | 47.2000.74 | Foot | | 2 |
| 5. | 36.2018.76 | Valve | 62 | 6 | 23. | 69.1600.22 | Crankcase Cover | | 1 | 42. | 90.9162.00 | Bushing | | 3 |
| 6. | 94.7394.00 | Spring | 62 | 6 | 24. | 69.0300.01 | Connecting Rod | | 3 | 43. | 96.7106.00 | Washer | | 4 |
| 7. | 36.2008.51 | Valve Guide | 62 | 6 | | 69.0303.01 | Connecting Rod (TS1531) | | | 44. | 99.3644.00 | Screw | | 4 |
| 8. | 90.4051.00 | O-Ring | | 6 | 25. | 96.7014.00 | Washer | | 6 | 45. | 90.3885.00 | O-Ring | 57,82 | 3 |
| 9. | 98.2312.00 | Cap | | 6 | 26. | 99.3099.00 | Screw | | 6 | 46. | 69.0804.70 | Packing Retainer | 57,82 | 3 |
| 10. | 36.7060.01 | Valve Unit | 62 | 6 | 27. | 90.3833.00 | O-Ring | | 1 | 47. | 90.2705.00 | Packing | 69,82 | 3 |
| 11. | 90.1656.00 | Seal | 37 | 3 | 28. | 97.5968.00 | Indicator | | 1 | 48. | 47.1000.51 | Head Ring | 7,82 | 3 |
| 12. | 69.0100.22 | Cover | | 1 | 29. | 98.2100.00 | Cap | | 2 | 49. | 47.2169.70 | Intermediate Ring | 71,82 | 3 |
| 13. | 98.2106.00 | Oil Dipstick | | 1 | 30. | 99.1867.00 | Screw | | 9 | 50. | 90.2704.00 | Ring | 69,71,82 | 3 |
| 14. | 69.2119.84 | Gasket | | 1 | 31. | 97.7398.00 | Plunger Pin | | 3 | 51. | 98.2265.00 | Cap | | 1 |
| 15. | 47.2195.66 | Plunger Bolt | 54 | 3 | 32. | 69.0502.54 | Plunger Guide | | 3 | 52. | 96.7700.00 | Washer | | 1 |
| 16. | 90.3585.00 | O-Ring | 54 | 3 | 34. | 69.2117.47 | Flinger | 54 | 3 | 53. | 96.7380.00 | Washer | | 1 |
| 17. | 90.5067.00 | Anti-Ext. Ring | 54 | 3 | 35. | 99.3636.00 | Screw | | 8 | 54. | 69.1210.41 | Manifold | | 1 |
| 18. | 96.7280.00 | Washer | 54 | 3 | 36. | 68.1500.74 | Crankcase Cover | | 2 | 55. | 69.2116.51 | Spacer | | 1 |
| | | | | | 37. | 69.2115.51 | Spacer | | 1 | 56. | 90.2710.00 | Seal, Low Press., 20mm | 69,82 | 3 |

REPAIR KITS

| KIT NO. | 7 | 32 | 37 | 54 | 57 | 62 | 69 | 71 | 82 |
|--------------------------------------|----|----|----|--------------------|--------|--------------------|------------|--------|----------------------------|
| ITEM NO.s INCLUDED IN KIT | 48 | 38 | 11 | 15, 16, 17, 18, 34 | 45, 46 | 3, 4, 5, 6, 7 (10) | 47, 50, 56 | 49, 50 | 45, 46, 47, 48, 49, 50, 56 |
| NUMBER OF ASSEMBLIES IN KIT | 6 | 2 | 3 | 3 | 3 | 6 | 3 | 3 | 1 |
| NUMBER OF CYLINDERS KIT WILL SERVICE | 3 | 2 | 3 | 3 | 3 | 3 | 3 | 3 | 1 |

TORQUE SPECS*

| Position | Ft.-lbs. |
|----------|----------|
| 1 | 29.4 |
| 9 | 73.7 |
| 15 | 14.7 |
| 26 | 14.7 |
| 28 | 13.2 |
| 29 | 29.4 |
| 30 | 7.3 |
| 35 | 29.4 |
| 44 | 29.4 |
| 51 | 51.5 |

*Decrease torque by 20% if threads are lubricated.

